

**KEY:**

- INTERSECTION BUMPOUTS
- PRIMARY INTERSECTIONS (HIGHER LEVEL OF FINISH)
- GATEWAY LOCATION
- DISTRICT MARKER LOCATION
- CIRCULAR INTERSECTION (WITH DRIVE-OVER ISLAND FOR LARGE VEHICLES)
- PUBLIC PARKING LOT



## INTERSECTION IMPROVEMENTS + GATEWAYS

Intersections in a downtown setting have high volumes of pedestrian and vehicular use. Bump-outs reduce crossing distances for pedestrians, while improving sight lines for both pedestrians and drivers. They also provide space for amenities such as pavers, benches, planting beds, sculpture, decorative lighting and signage. Our recommendation is to provide bump-outs for all intersections within downtown that are wide enough to accommodate them. We've identified key intersections that due to their high visibility and usage will have a higher level of finish with more streetscape elements.

The diagram on the previous board shows locations for gateway monuments and district markers. The gateway monuments signify main entrances into downtown and are larger scale. District monuments are smaller scale and meant to be viewed and approached by pedestrians. They provide a unique sense of place and wayfinding for the downtown core.



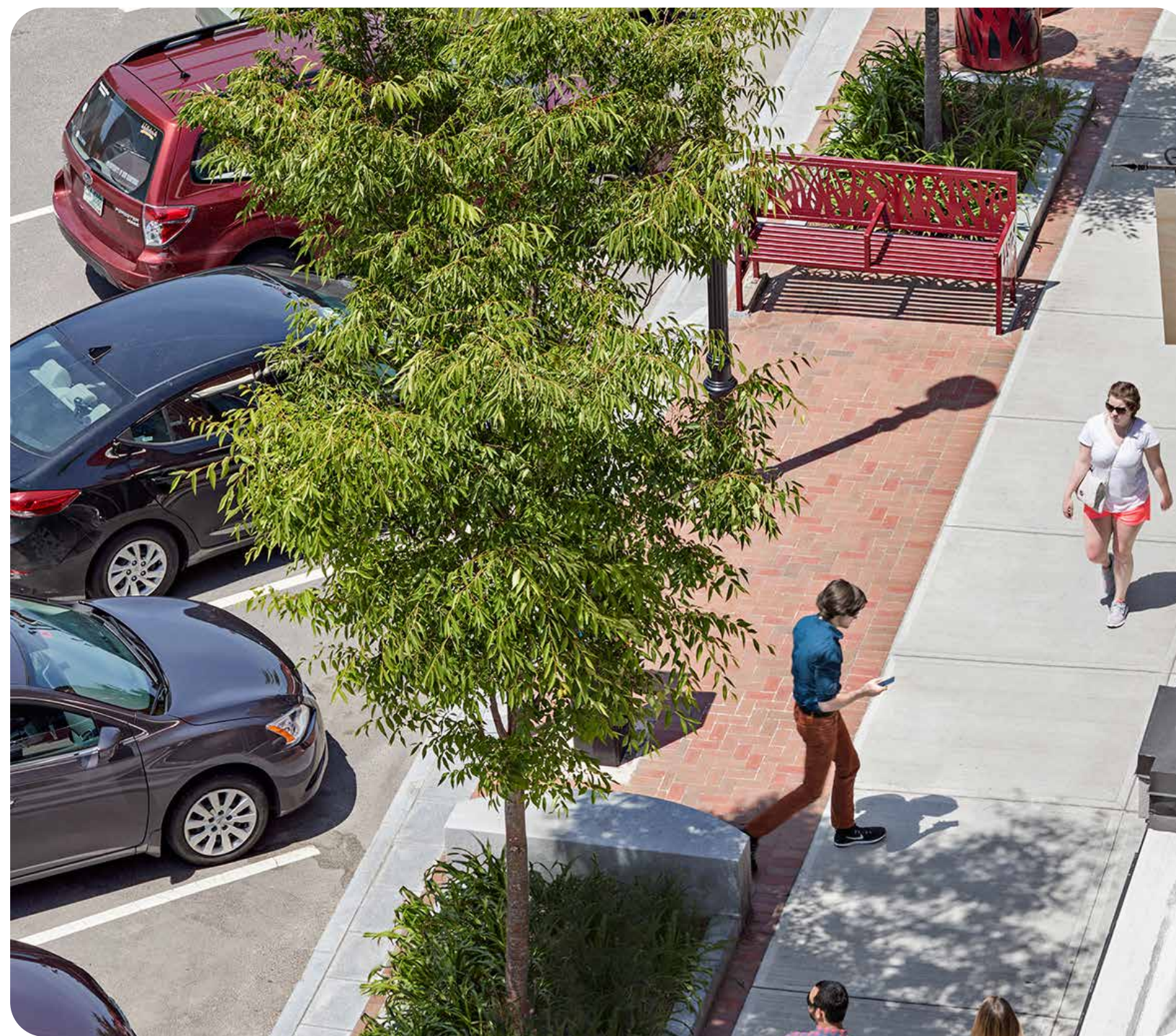
INTERSECTION BUMP-OUT



GATEWAY/PRIMARY MONUMENT



DISTRICT/SECONDARY MONUMENT



DEFINED SIDEWALK "ZONES"



DECORATIVE LIGHTING







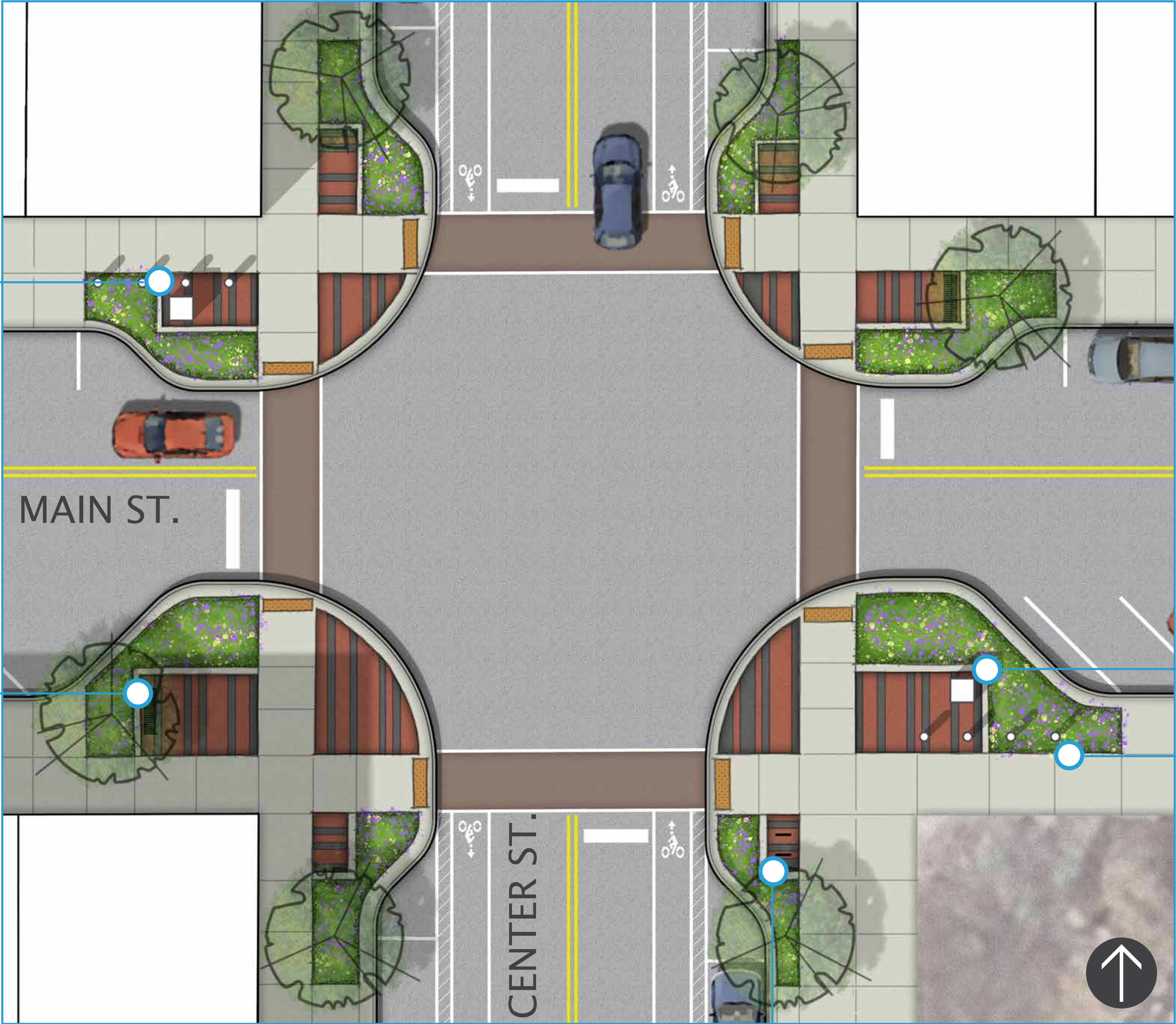
DECORATIVE PAVING



DECORATIVE PAVING



SEATING AREA



BIKE RACKS



MONUMENT/DISTRICT SIGN



ARTISTIC LIGHTING