

# PROJECT OVERVIEW

## PROJECT FUNDING PARTNERS

- Martha Ellen Tye Foundation
- Region 6 Planning Commission
- City of Marshalltown

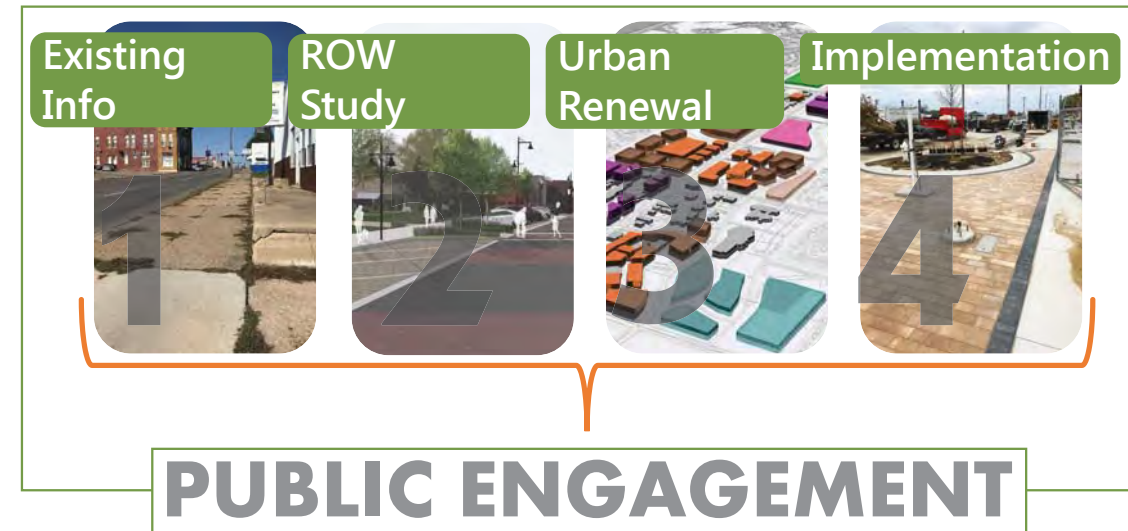
## PROJECT OBJECTIVE

Develop a planning document with recommendations focused on enhancing the economic vitality, public safety, and visual quality of the Hwy 14 Corridor and propose zoning and land use changes that will help drive development.

## CORRIDOR STUDY OUTCOME

- Planning concepts not final designs
- A usable document with community derived strategies
- Prioritized recommendations based on community input
- Implementation, funding and timeframe

## CORRIDOR STUDY COMPONENTS



## TIMELINE



# PROJECT GOALS

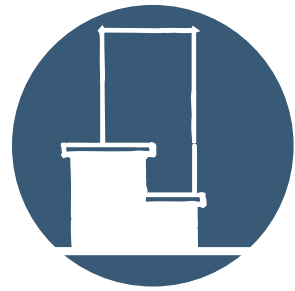
---



Determine strategies for creating a **SAFER** corridor for all users



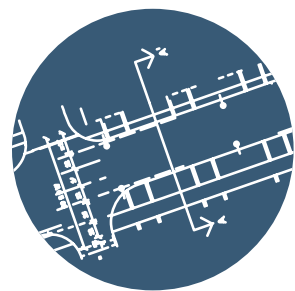
Allow for a **MULTIMODAL** street - a corridor for everyone



Create opportunities to improve community **BRANDING + IDENTITY.**



Develop land-use and zoning recommendations to promote **ECONOMIC GROWTH**



Develop a plan that is **COMMUNITY SUPPORTED + TECHNICALLY SOUND**