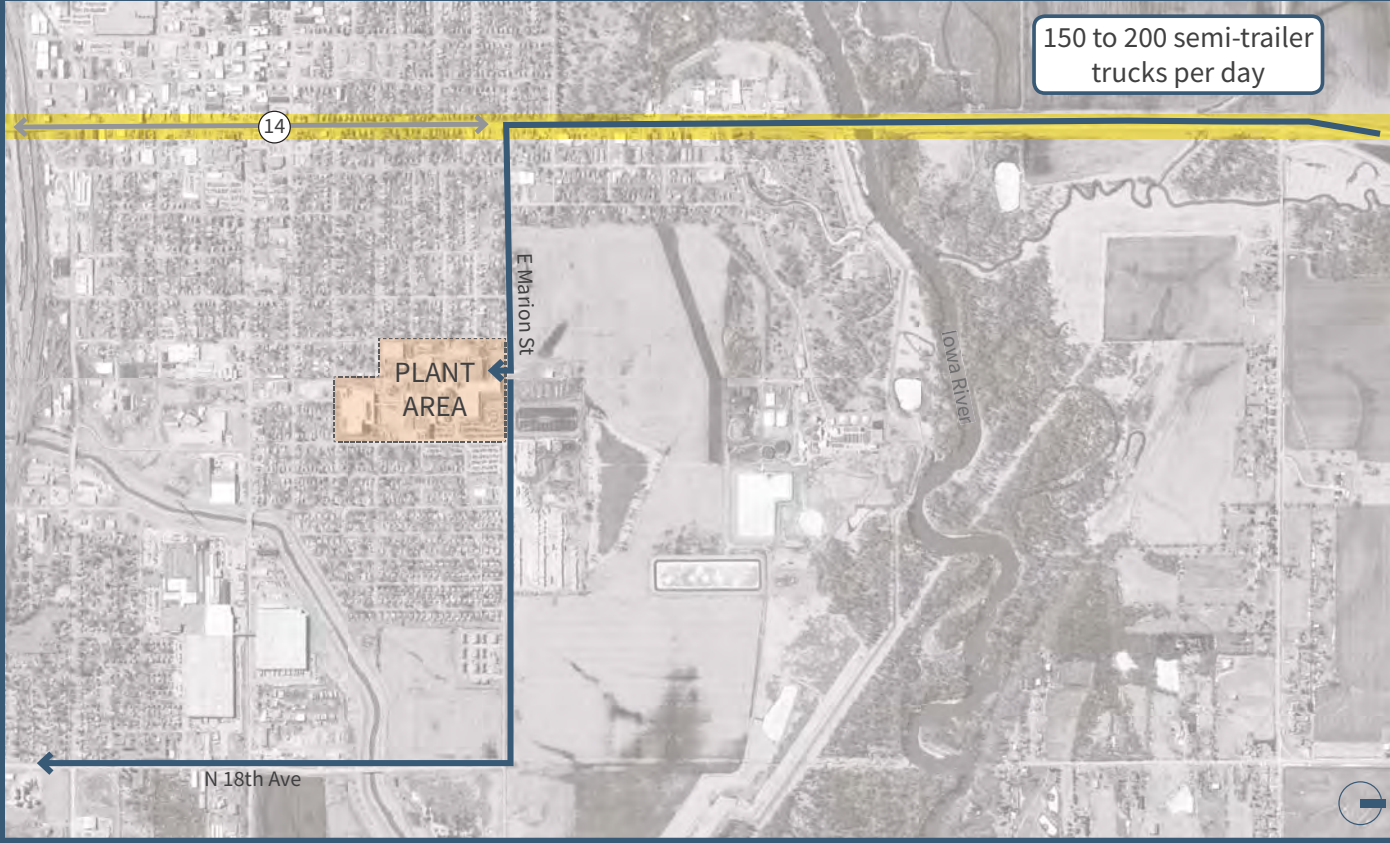


5 TRUCK TRAFFIC DIVERSION

I LIKE...

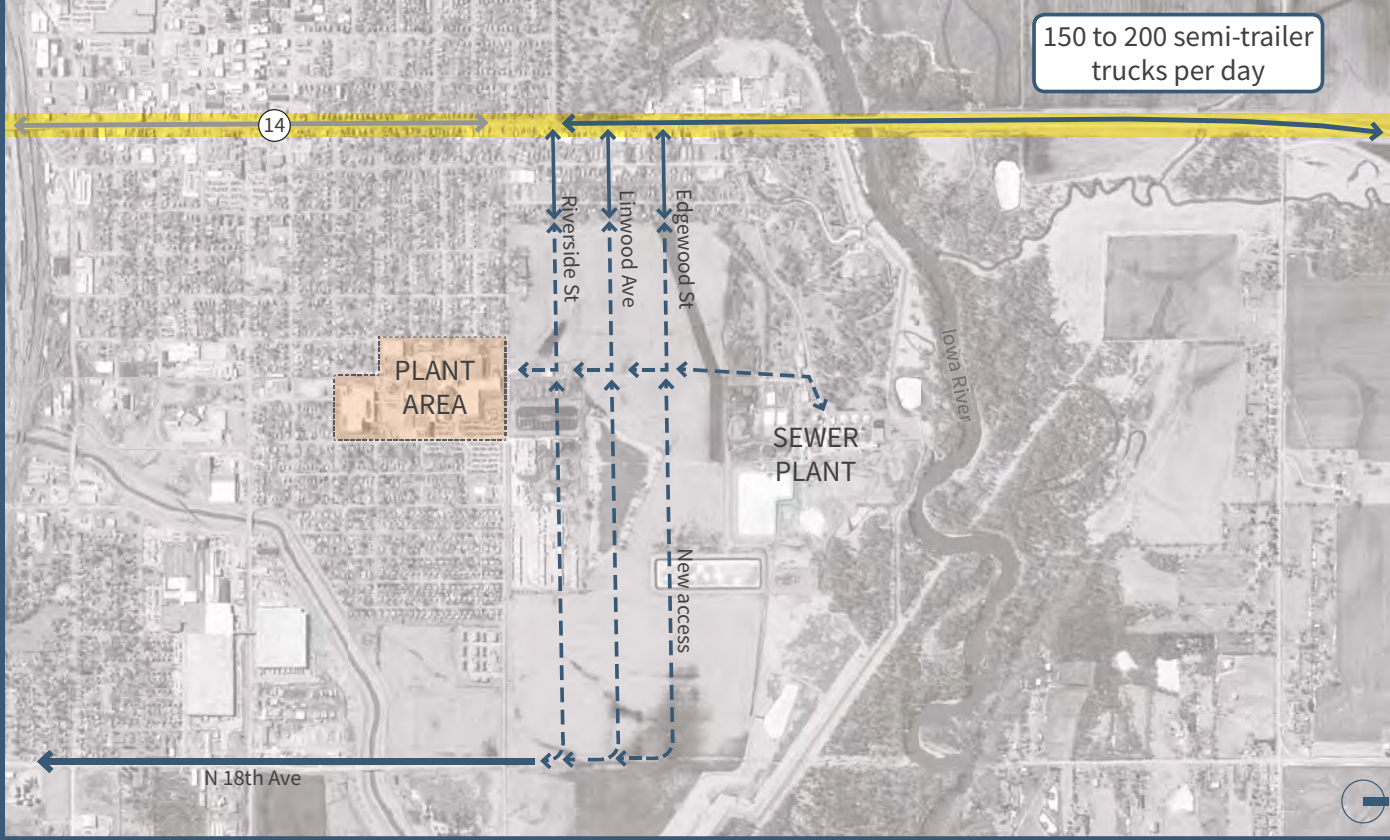
EXISTING ROUTE



NOTES

- Between 150 and 200 semi-trailer trucks use Highway 14 daily to access an industrial plant area on E Marion Street.

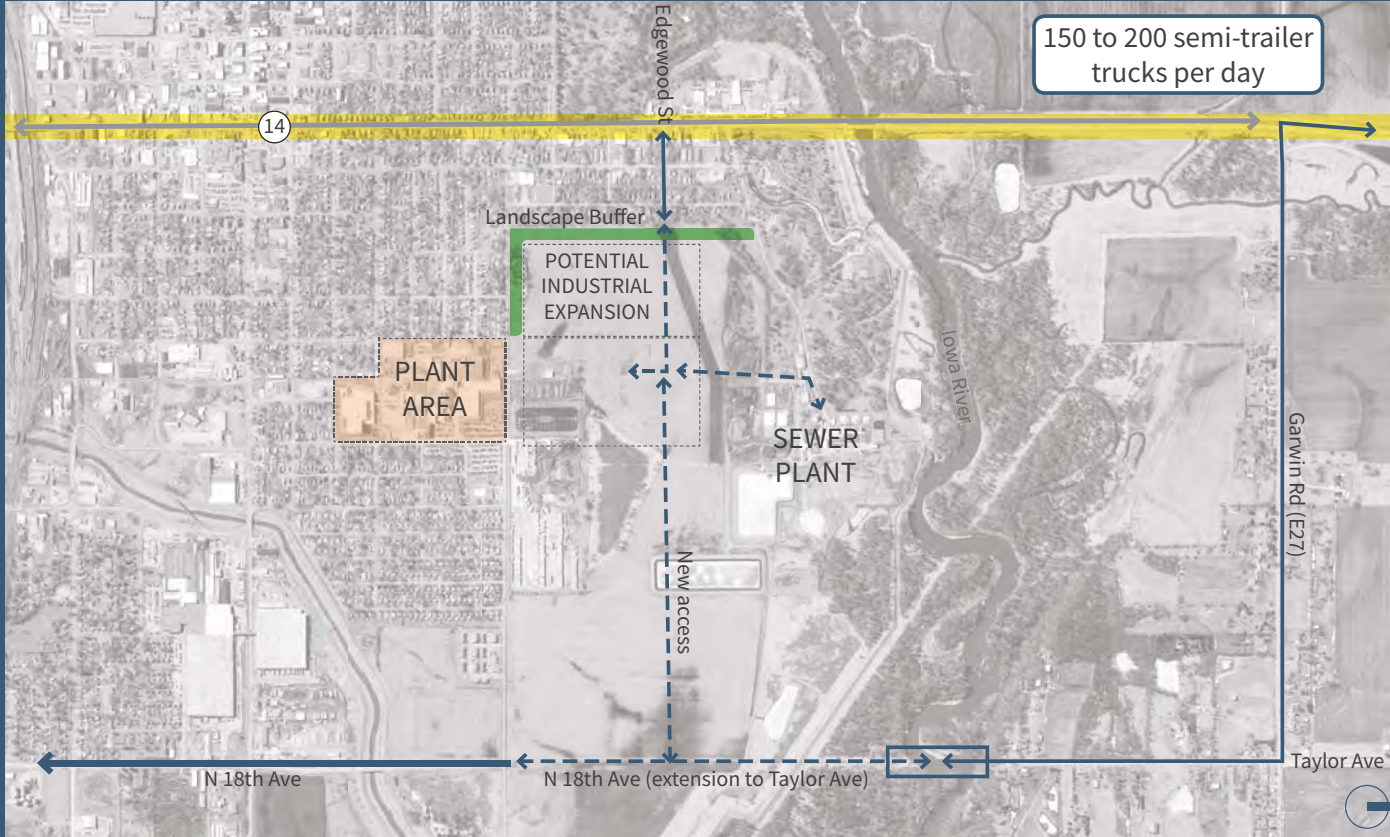
1 TO 5 YEAR POTENTIAL OPPORTUNITY



NOTES

- The semi-trailer truck traffic could be diverted from E Marion Street to another route to the north including: Edgewood Street, Linwood Street, or Riverside Street.
- This new access could also connect truck traffic to the Sewer Plant to the north.
- The access ways have the potential to reach south to N 18th Street.

20 TO 50 YEAR POTENTIAL OPPORTUNITY



NOTES

- Truck traffic could route east on Garwin Road to Taylor Ave, south to a new bridge and new roadway network.
- This scheme will reduce conflict with truck traffic and the neighborhood east of Highway 14.

MARCH 2018